

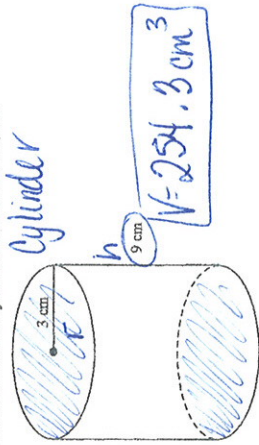
Math 7 - Chapter 10 Volume Review 2 Worksheet

Short Answer

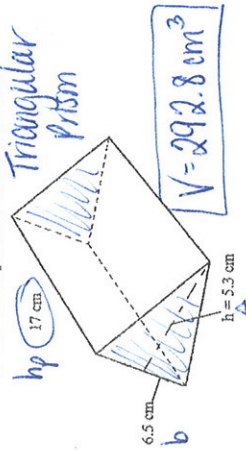
1. Find the volume of the prism to the nearest tenth.



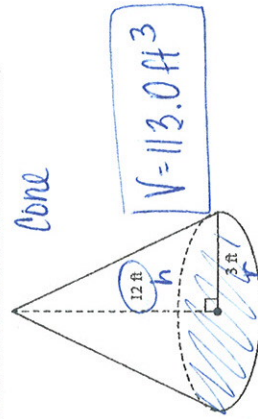
4. Find the volume of the cylinder to the nearest tenth.



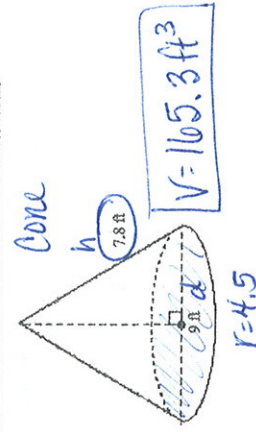
2. Find the volume of the prism to the nearest tenth.



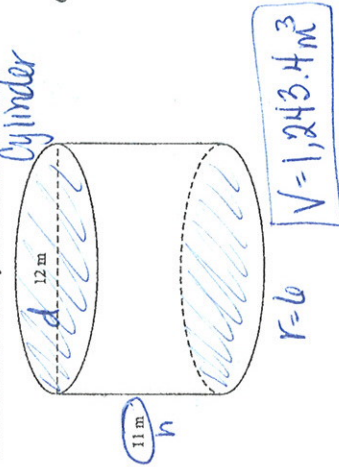
5. Find the volume of the cone to the nearest tenth.



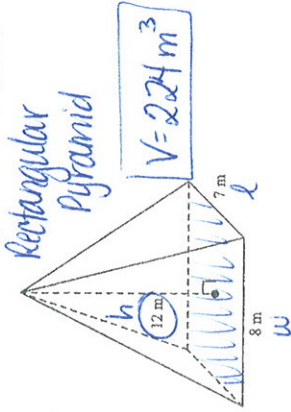
6. Find the volume of the cone to the nearest tenth.



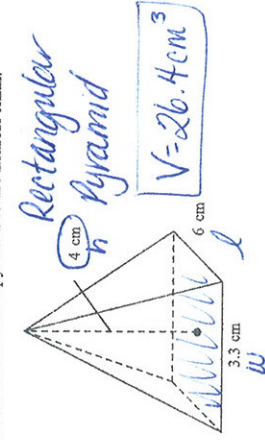
3. Find the volume of the cylinder to the nearest tenth.



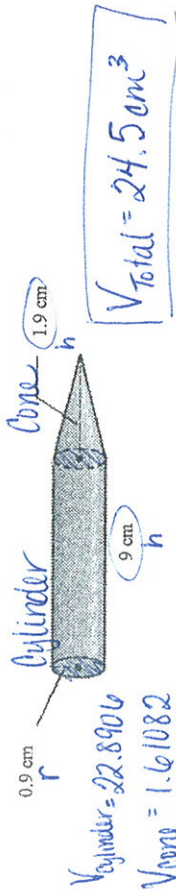
7. Find the volume of the pyramid to the nearest tenth.



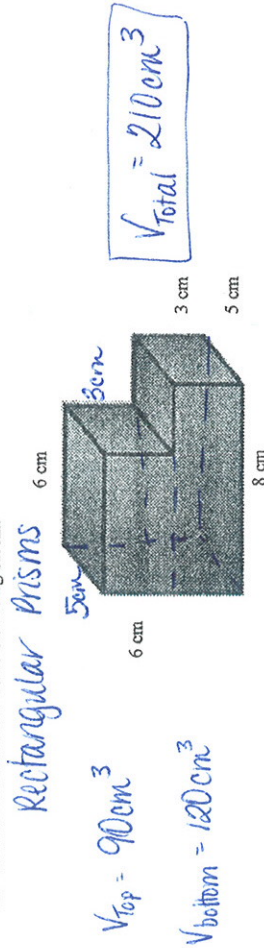
8. Find the volume of the pyramid to the nearest tenth.



9. Find the volume of the crayon shown. The crayon consists of a cylinder with a cone at one end. Use 3.14 for π . Round to the nearest tenth if necessary.



10. Find the volume of the Carlo's building block.



11. A triangular pyramid has a volume of 550 cubic meters. What is the volume of a triangular pyramid with dimensions $\frac{1}{7}$ of the original? Round to the nearest tenth.

$V_N = 1.6 \text{ m}^3$

12. A rectangular prism has a volume of 274 cubic meters. What is the volume of a rectangular prism with dimensions $\frac{1}{2}$ of the original? Round to the nearest tenth.

$V_N = 34.3 \text{ m}^3$