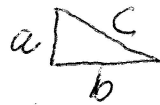


a + b ARE PERPENDICULAR + THE SHORT SIDES
 OF THE TRIANGLE
 c IS THE LONG SIDE



LENGTH		AREA			LENGTH
a	b	a^2	b^2	c^2	c
1	2				
3	3				
3	4				
2	4				
4	5				

ON GRAPH PAPER, DRAW RIGHT TRIANGLES
 WITH SIDE LENGTHS a + b , c WILL CONNECT
 a + b TO MAKE A TRIANGLE. ON EACH SIDE OF
 TRIANGLE, MAKE A SQUARE. FIND AREA OF
 EACH SQUARE + LIST IT IN TABLE ABOVE.

EXAMPLE

